



ENCATC

The European network on cultural management and policy

UPDATED
30.05.2016



DCSL via Flickr CC BY-NC 2.0

4th ENCATC International Study Tour
PROGRAMME & PRACTICAL INFORMATION

3-7.06.2016
Boston, USA

An initiative of:



In partnership with:



Northeastern University
College of Arts, Media and Design



With the support of:



Co-funded by the
Creative Europe Programme
of the European Union

4TH ENCATC INTERNATIONAL STUDY TOUR IN BOSTON, USA

New York, Shanghai, Barcelona, and now Boston! With the 4th edition of ENCATC's International Study Tour you're invited to discover what goes on behind the scenes in one America's major cultural cities! With more than 16,000,000 visitors each year, come and see for yourself what's buzzing about Boston and experience first-hand its legacy for arts, culture and education.



Do you work for or are affiliated with a Higher Education institution? Research institute? Cultural network? Vocational, Education and Training (VET) institution? Cultural institution? Or just very passionate about culture and are eager to learn?

Answer yes to any of the questions above and this international study tour has been designed with you in mind!

The five-day **intense** and **interactive** programme is a once in a lifetime experience to gain **new perspectives** and **insights** into the **city's vibrant cultural scene**.

Not your average visit, the ENCATC International Study Tour includes lectures, study visits, cultural tours, and lively discussions to be led by distinguished experts in the field. The tour's many networking opportunities will have you mingling with leaders, experts, professionals, practitioners and artists in Boston's cultural scene.

WHAT IS ENCATC OFFERING YOU?

This is a once in a lifetime experience to discover Boston's rich cultural offer and meet with like-minded individuals who are eager to learn best practice, be inspired by innovative programmes, and are passionate for culture!

Go beyond: unique access in the field

Any tourist can visit Boston's major cultural sites, but ENCATC's study tour will take it to a level not accessible to the average visitor. We will guide you **into the field** to gain privileged access to the **Museum of Fine Arts Boston**, the **Boston Symphony Orchestra**, **Boston Pops**, **SoWa Boston**, **Harvard University**, and more!

We'll have you meeting directly with leaders and professionals working in these flagship cultural institutions, engaging with local artists, and discussing with community leaders.



Leaders and experts at your fingertips!

Hear first-hand from cultural leader **Margo Saulnier** (Pops at the Boston Symphony Orchestra) to learn about their challenges, successes, and innovative ideas implemented to ensure a dynamic cultural offer for audiences coming near and far.

Join our discussion with **Allyson Esposito** (The Boston Foundation) to understand how one of the oldest and largest community foundations in the United States serves the Greater Boston area and its actions in the cultural arena.

Julie Burros is the first Chief of Arts and Culture in Boston to be appointed in more than 20 years. She'll be sharing her experience and knowledge with study tour participants. Learn about how under her leadership, Boston has been rolling out new initiatives to boost culture and creativity, create a vibrant and sustainable arts and culture ecosystem, mobilise likely and unlikely partnerships, and increase citizen engagement.

Tim Rivera, Programs Officer for the Delegation of the European Union to the United States, will speak about the public diplomacy strategy of the EU Delegation and the cultural programs run in the US: from the EU Embassies' Open House, European Month of Culture, AFI-EU Film Showcase, the Kids Euro Festival, and the Getting to Know Europe grants program. He will also speak about different funding and management models for cultural operators in the US versus Europe.

Grow your network and your institution's

In a convivial and relaxed atmosphere, exchange your ideas, projects, experiences with key cultural players, academics, researchers, entrepreneurs, policy makers, and artists from North America, Europe, and beyond. Bounce ideas for partnerships, see how you can collaborate in the future, and explore new opportunities for you and your institution!

#ENCATCinBoston

WHO IS THIS STUDY TOUR IN BOSTON FOR?

This international study tour has been designed to academics, researchers, cultural managers, practitioners, artists, policy makers, students and the wider public interested in gaining unique access to Boston's cultural institutions, the knowledge and expertise of cultural and community leaders, and grow their network in the United States!

8 KEY BENEFITS WAITING TO BE UNLOCKED

For you

Explore a vibrant cultural city - Get to know Boston in a way never before with behind-the-scene visits

Receive first-hand knowledge - Learn from leading experts and practitioners

Leave inspired - Get the latest trends and practices happening in the field right now

Expand your professional contacts - Network and share your experiences with other participants from Europe and beyond

For your institution

Develop collaborations and ties - Meet with representatives from universities, art organisations, and cultural companies

Raise the profile of your institution - Present your institution to an American and international audience

Find partners - Share your project ideas to find American and international partners

Professionalise your staff - Bring back best practice and cases to be shared with colleagues

4TH ENCATC INTERNATIONAL STUDY TOUR IN BOSTON, USA

PROGRAMME

Friday, 3 June

Arrival in Boston

19:00 Welcome Dinner (*at participants' expenses*)

Saturday, 4 June

10:45 **Meeting Point at the Boston Public Library**
Address: 700 Boylston St., MA 02116

11:00-12:00 **Boston Public Library Architecture Tour**
Address: 700 Boylston St., MA 02116
Walking to the next visit and lunch on the way (at participants' expenses)

13:00-14:30 **Freedom Trail walking tour**
Address: 139 Tremont St, Boston, MA 02108
Tour departs from Boston Common Visitor Information Center

14:30-15:30 **Free time**
Public transport to the next visit (about 30 minutes)

16:30 - 17:40 **Harvard University Historic Guided Tour**
Address: Harvard Square
Tour departs from the middle of Harvard Square outside the Main Harvard Redline Subway Station next to the Out of Town News Kiosk

18:30 - 20:30 **Dinner (at participants' expenses)**
Optional cultural activity (see page 20)



Photo by Jeff Gunn via Flickr CC BY 2.0

Sunday, 5 June

11:00-12:30

SoWa Gallery Tour and South End Market

Address: Boston's South End neighborhood

[SoWa](#) (South of Washington), Boston's gallery district, is a vibrant destination on summer Sundays starting around 10am. Visitors can browse dozens of galleries, the [SoWa Vintage Market](#) (indoors), and the SoWa Arts and Crafts Market (outdoors, 75+ vendors). Dining options include a local farmers market, 20 food trucks, and several close cafés, bistros, and pubs. Everything is in easy walking distance, and you are encouraged to come early and explore!

Recommended galleries include:

- Allston Skirt Gallery
- Ars Libri / Robert Klein
- Carroll and Sons
- Gallery Kayafas
- Kingston Gallery
- Samson Projects
- Steven Zevitas Gallery
- Yezerski + Miller Gallery

12:30-13:30

Lunch in the neighborhood *(at participants' expenses)*

Public transport to the next visit (about 30 minutes)

14:00-17:00

Institute of Contemporary Art (ICA)

Address: 25 Harbor Shore Drive, Boston, MA 02210

Gallery Talk: [Sasha Goldman and Bryn Schockmel on Geoffrey Farmer](#)

Visit to the collection of Institute of Contemporary Art (*Tickets at participants' expenses*)

17:00-19:00

Free time

19:00-21:00

Dinner *(at participants' expenses)* + **Cultural Activity Suggestions** *(see page 20)*

10:00-12:45

Seminar on EU-US Cultural Relations (10:00-12:45)

Address: Boston University, 808 Commonwealth Ave, Room 109

This seminar is a unique occasion for European and USA cultural operators to better understand the EU-USA external policy in the cultural field and the instruments already available for cooperation between EU and USA organisations and actors. To start the morning, **Timothy Rivera** will talk about policy to better understand the public diplomacy strategy of the EU Delegation and the cultural programmes run in the US: from the EU Embassies' Open House, European Month of Culture, AFI-EU Film Showcase, the Kids Euro Festival, and the Getting to Know Europe grants programme. In addition, he will give insights about different funding and management models for cultural operators in the US versus Europe. **Sarah Delude** will talk about the cooperation between UK and US, focusing on education. To follow, **GiannaLia Cogliandro Beyens** will present to the audience the EU Creative Europe programme and cultural networks with a specific focus on ENCATC, the European network on cultural management and policy. To know more about the existing projects between the two rivers, professor **Patrick Fuery** will talk about the two-year initiative to promote awareness of European Creative and Cultural Industries (CCI) through a series of residency programmes and conferences supported by the Getting To Know Europe grant. Working actively already since many years from the UK to boost cooperation with USA stakeholders, **Mary Helen Young** will talk about the international participation in EU support programmes for culture, with a focus on ACP Cultures+ and Creative Europe. To conclude, **Allyson Esposito** will talk about the arts and culture programmes of The Boston Foundation.

10:00-10:05

Welcome and opening by **Annick Schramme**, ENCATC President, Professor, University of Antwerp/Antwerp Management School, Belgium

Seminar Panellists:

10:05-10:30

Timothy Rivera, Programs Officer, Delegation of the European Union to the United States

10:30-11:00

Sarah Delude, Senior Officer: Policy & Universities, Politics, Press & Public Affairs, British Consulate-General Boston, USA

11:00-11:15

GiannaLia Cogliandro Beyens, ENCATC Secretary General

11:15-11:45

Patrick Fuery, Dean of Wilkinson College of the Arts, Humanities and Social Sciences Chapman University, USA

11:45-12:15

Mary Helen Young, Operations Manager, Visiting Arts, USA

12:15-12:45

Allyson Esposito, Director of Arts & Culture, The Boston Foundation, USA

12:45-13:30

Lunch (*at participants' expenses*)

Public transport to the next visit (about 20 minutes)



14:00-14:45 **Boston Symphony Orchestra / Symphony Hall Tour**
Address: Symphony Hall, 301 Massachusetts Avenue, Boston, MA 02115
Guide: Paul Dunlap

15:00-16:00 Meeting with **Margo Saulnier**, Assistant Director of Artistic Planning, Boston Pops, USA
Address: Northeastern University, 11 Leon Street, Ryder Hall, Room 204

16:00-17:30 Meeting with **Julie Burros**, Chief of Arts and Culture for the city of Boston, USA
Address: Northeastern University, 11 Leon Street, Ryder Hall, Room 204

18:00-20:00 **Dinner** (*at participants' expenses*)

20:00-22:00 **Optional cultural activity** (*see page 20*)

Tuesday, 7 June

09:00-09:30 Light breakfast
Address: Boston University, 808 Commonwealth Ave, Room 109

09:30-11:00 **Research Panel**
Address: Boston University, 808 Commonwealth Ave, Room 109

Chaired by **Richard Maloney**, Professor, Boston University, USA

Introduction

Presentations from panellists:

- **Doug DeNatale**, PhD – Arts Administration program, Boston University, USA
- **Neil Alper**, PhD – Department of Economics, Northeastern University, USA
- **Pacey Foster**, PhD – College of Management, University of Massachusetts, Boston, USA
- **Annick Schramme**, ENCATC President, Professor, University of Antwerp/Antwerp Management School, Belgium
- **Alan Salzenstein**, AAAE President, Professor, DePaul University, USA

Debate among panellists

Q&A session with public



Photo by Péro Ubu via Flickr CC BY-NC 2.0

11:30-12:30	Lunch (<i>at participants' expenses</i>) <i>Public transport to the next visit (about 20 minutes)</i>
13:00-15:30	Museum of Fine Arts <i>Address: 465 Huntington Ave, Boston, MA 02115</i> Presentation by Kristen Hoskins Manager of Lectures, Courses, and Concerts and Jasmine Hagans , Curator of Lectures, Courses, and Concerts, USA Free visit to the museum <i>Walk to the next visit (about 15 minutes)</i>
16:00-17:30	Harvard Cultural Agents <i>Address: Northeastern University, 11 Leon Street, Ryder Hall, Room 204</i> Presentation by Doris Sommer , Professor, Director and founder of Cultural Agents Initiative at Harvard University, USA www.culturalagents.org
17:30-18:30	Our Boston ", an oral history/archive project on the Boston Marathon bombing, Digital Humanities, the Digital Scholarship Group, and Digital Humanities pedagogy <i>Address: Northeastern University, Media lounge, Library's digital scholarship commons</i> Meeting with Sarah Connell , Project Manager, Northeastern University and Joanne DeCaro , Photographer, Press office of the Governor of Massachusetts, USA
19:00	Farewell dinner (<i>at participants' expenses</i>)

WHAT WILL WE VISIT?

Boston Pops

301 Massachusetts Avenue, Boston, MA 02115

For more than 125 years, "America's Orchestra" has led the way in programming that makes classical and popular music fun, accessible, and relevant to today's listening audiences. What began in 1885 as an ensemble playing a modest series of Promenade Concerts has grown into the most recorded and arguably the most beloved orchestra in the country, renowned for an ingenious and engaging blend of styles. During its two annual seasons at Symphony Hall for spring and holiday concerts, the Boston Pops has attracted thousands of listeners with its energetic programmes. Through concerts, recordings, television, and special events, the Pops reaches millions of music lovers each year. In the process, the ensemble expanded what has become an unrivalled library of popular music in orchestral arrangements. Traditionally, the orchestra's repertoire is built on its storied legacy of performing appealing programs that combine light symphonic fare, American classics, memorable hits from film and Broadway, and a wide variety of pop, jazz, indie rock, big band, and country music. [Learn more!](#)



Boston Public Library

700 Boylston St., MA 02116

Established in 1848, by an act of the Great and General Court of Massachusetts, the Boston Public Library (BPL) was the first large free municipal library in the United States. Today, the Boston Public Library system includes a Central Library, twenty-four branches, a map center, a business library, and a website filled with digital content. Last year, 3.7 million people visited the Boston Public Library system, many in pursuit of research material, others looking for an afternoon's reading or the use of the computer or to attend a class, still others for the magnificent and unique art and architecture of many library locations. There were 7.9 million visits to the library's website and 3.7 million books and audiovisual items borrowed or downloaded. [Learn more!](#)



Boston Symphony Orchestra

301 Massachusetts Avenue, Boston, MA 02115

Known for its diverse programs, passionate performances, and tradition of innovation, the Boston Symphony Orchestra has been at the forefront of artistic excellence for more than 130 years. Now in its 132nd season, the Boston Symphony Orchestra gave its inaugural concert on October 22, 1881, and has continued to uphold the vision of its founder, the businessman, philanthropist, Civil War veteran, and amateur musician Henry Lee Higginson, for well over a century. The architecture is modeled after two of the top concert halls in the world, the Leipzig Neues Gewandhaus and the old Boston Music Hall. From the orchestra's founding in 1881 until 1918, all six of the BSO's music directors were central Europeans recruited by Higginson who built the



BSO upon the German musical traditions he learned to love as a student in Vienna. Today the Boston Symphony Orchestra, Inc., presents more than 250 concerts annually. [Learn more!](#)

Freedom Trail Walking Tour

A 2.5-mile (4 km), the Freedom Train is a red-lined route that leads you to 16 historically significant sites — each one an authentic treasure in Boston. Explore museums and meetinghouses, churches, and burying grounds. Learn about the brave people who shaped the birth of the United States. Discover the rich history of the American Revolution, as it began in Boston, where every step tells a story. [Learn more!](#)



Harvard University

Cambridge, MA 02138

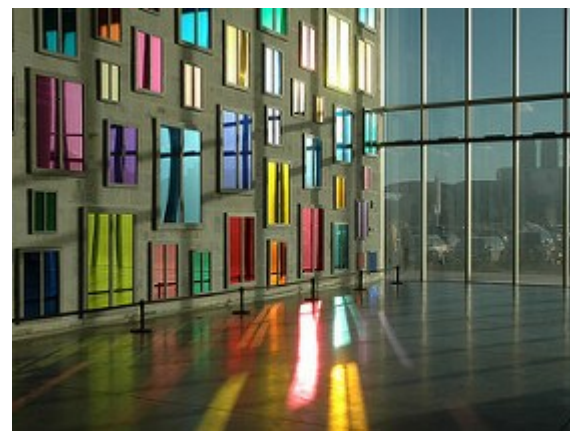
Established 1636, Harvard is the United States' oldest institution of higher learning. Eight U.S. presidents graduated from Harvard College, including Franklin Delano Roosevelt and John F. Kennedy. Harvard also has the largest endowment of any school in the world. The University, which is based in Cambridge and Boston, Massachusetts, has an enrollment of over 20,000 degree candidates, including undergraduate, graduate, and professional students. Harvard has more than 360,000 alumni around the world. [Learn more!](#)



Institute of Contemporary Art (ICA)

25 Harbor Shore Drive, Boston, MA 02210

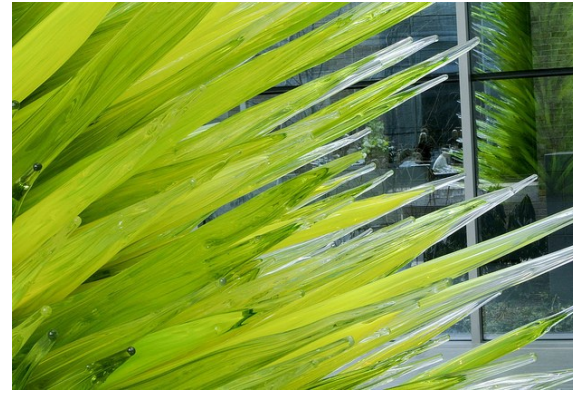
ounded in 1936 as the Boston Museum of Modern Art—a sister institution to New York's MoMA—the museum was conceived as a laboratory where innovative approaches to art could be championed. The museum established a reputation for identifying important new artists, and in pursuit of this mission, eventually parted ways with MoMA and changed its name to the Institute of Contemporary Art in 1948. As the ICA's reputation grew around the nation, it paved the way for other institutes and museums of "contemporary art" as well as artists' spaces and alternative venues. For more than 75 years, the ICA has presented contemporary art in all media—visual arts, performance, film, video, and literature—and created educational programs that encourage appreciation for contemporary culture. [Learn more!](#)



Museum of Fine Arts Boston

465 Huntington Ave, Boston, MA 02115

The original MFA opened its doors to the public on July 4, 1876, the nation's centennial. Built in Copley Square, the MFA was then home to 5,600 works of art. Over the next several years, the collection and number of visitors grew exponentially, and in 1909 the Museum moved to its current home on Huntington Avenue. Today the MFA is one of the most comprehensive art museums in the world; [the collection](#) encompasses nearly 500,000 works of art. We welcome more than one million visitors each year to experience art from ancient Egyptian to contemporary, special exhibitions, and innovative educational programmes. The Museum has undergone significant expansion and change in recent years; 2010 marked the opening of the Art of the Americas Wing, with four levels of American art from ancient to modern. In 2011, the west wing of the Museum was transformed into the Linde Family Wing for Contemporary Art, with new galleries for contemporary art and social and learning spaces. Improved and new galleries for European, Asian, and African art have opened through 2013, with more to come. [Learn more!](#)



SoWa Boston

Boston's South End neighborhood

SoWa Boston is a community of artisans, entrepreneurs, and creative minds that believe in crafting quality hand-made goods you won't find anywhere else. Simply put, SoWa is Boston's cooler, hipper alternative to Faneuil Hall or Newbury Street. Whether it's one of USA Today's Top 10 Art District establishments, countless "Best of Boston" winning shops & boutiques, or the now-famous SoWa Open Market and SoWa Vintage Market, SoWa is a one-of-a-kind experience supporting local talent and creativity. [Learn more!](#)



Photo credits: Boston Pops by Chris Devers via Flickr CC BY-NC-ND 2.0; Boston Symphony Orchestra by Bart Hanlon via Flickr CC BY-NC-ND 2.0; Freedom Trail Walking Tour by Anosmia via Flickr CC BY-ND 2.0; Harvard University by TheRoss via Flickr CC BY-SA 2.0; Museum of Fine Arts Boston by Ines via Flickr CC BY-NC-ND 2.0; Art Market by Spitalfields_E1 via Flickr CC BY-SA 2.0. ICA by giladlotan via Flickr CC BY-NC 2.0

MEET YOUR SPEAKERS

The ENCATC International Study Tour is bringing you interesting new perspectives and key insights on cultural management and policy in Boston and the United States thanks to our invited experts.

Neil Alper has been at Northeastern University since 1979. He is **Associate Professor of Economics and Director of Undergraduate Program**. His teaching and research interests are in applied microeconomics. Prior to Northeastern, he held a joint position in the Department of Economics and the Center for Business and Economics Research at the University of Tennessee, Knoxville. He has published articles, books, chapters and reports, and presented papers primarily in cultural economics, focusing on the economics of artists. Additionally, he has publications in the economics of crime and labor economics. His research has involved primary data collection as well as use of large-scale surveys such as the Decennial Census and the American Community Survey. The Tennessee Department of Employment Security, the U.S. Department of Labor, the New England Foundation for the Arts and the National Endowment for the Arts have funded his research. He is a member of the Association for Cultural Economics International and served as its executive secretary-treasurer.



Julie Burros is the **Chief of Arts and Culture for the city of Boston**, a cabinet level position reporting directly to Mayor Martin J. Walsh. She oversees the office of Arts and Culture which houses the Boston Cultural Council and the Boston Art Commission. Her duties include heading up the creation of a Cultural Plan for Boston, oversight of grant making, grant seeking, public art, exhibitions and selected public programmes and events. Formerly Burros was the director of Cultural Planning at the city of Chicago Department of Cultural Affairs and Special Events, where she directed the creation of the 2012 Chicago Cultural Plan. Burros is adjunct researcher at the University of International Business and Economics (UIBE) School of Public Administration in Beijing China, and adjunct faculty at The Theater School at DePaul University in Chicago.



GiannaLia Cogliandro Beyens, has been since 2004 the **Secretary General** of ENCATC, the leading European network in the field of cultural management and cultural policy education. She is also the administrator of the Thomassen mobility programme and serves on several boards. With more than 20 years experience in international relations, GiannaLia is an expert in advocacy, cultural policy and strategic management, in particular in the context of international cultural organisations. Former Policy Officer of the Cultural Forum of EUROCITIES, the network of major European cities, she successfully designed and coordinated several transnational and cross-sectorial projects in the field of culture and education. GiannaLia was Secretary General of the Association of the European Cities of Culture of the year 2000 set up in 1996 by the European Commission. Journalist since 1993, she started her career as Press & PR Officer for the N.A.T.O organisation in Rome. For the European Commission she wrote 10 Reports on social European policy and a major study on the European Cities of Culture for the year 2000. Educated at the University "La Sapienza" in Rome, GiannaLia



holds a Degree in Political Sciences - International Relations, a M.A. in European & International Career Studies and a M.A. in European Constitution. GiannaLia was trained for six months at the European Commission and at the Italian Institute for Foreign Trade, ICE, in Brussels.

Sarah Connell is the **project manager for the Women Writers Project** and a member of the Early Caribbean Digital Archive project design team. She received a Ph.D. in English from Northeastern in the spring of 2014 and her research focuses on the fictional and historical genres of medieval and early modern texts.



Sarah Delude is **Senior Officer: Press, Politics, and Public Affairs (Policy and Universities)** at the British Consulate-General Boston. She is responsible for the plan and implement the University engagement strategy which identifies key Universities. She also identifies, develops and maintains a network of relationships with University stakeholders across New England who can enrich the UK's understanding of US policy developments and influence US thinking. Sarah also works to lead engagement strategy with Future Leaders: identifying recruitment opportunities, planning creative events (and securing funding for them), generating value from the relationships, sustaining and communicating them. She assesses trends in academic policy including philanthropic funding, alumni engagement, scholarship and exchange programmes and collaborates on Defence engagement (with UKTI's Defence lead), Culture, Sports, Education and Arts - including as POC for OGDs/ partners such as BDS, British Council, HEFCE, the Royal Society etc.



Doug DeNatale, PhD, is **president of Community Logic, Inc.**, an arts consulting firm specializing in research and documentation. He previously served as director of research for the New England Foundation for the Arts (NEFA), where he played an instrumental role in forecasting the emerging creative economy and in developing the web-based research database CultureCount. Formerly, Doug was director of the oral history and folklife program and director of collections at the University of South Carolina's McKissick Museum. Trained as an ethnographer, Doug has directed collaborative arts research projects for the Ford Foundation, the Rockefeller Foundation, the Andrew W. Mellon Foundation, and the Library of Congress. He conducted oral histories for the Lowell National Historic Park, the Southern Oral History Program, and the J. Alden Weir National Historic Site, and curated exhibitions for the McKissick Museum and the Smithsonian Institution Center for Folklife and Cultural Heritage.



Allyson Esposito, a veteran arts and philanthropy advocate is **Director of Arts & Culture for the Boston Foundation**. Esposito came to Boston from the City of Chicago, where since 2012 she had served as the city's Director of Cultural Grant-making, in the Department of Cultural Affairs and Special Events. In that role she was charged with fostering partnerships and lasting relationships in Chicago's non-profit arts sector, independent artists, and for-profit art institutions. Esposito has extensive experience in the fields of cultural planning and the strategic development of arts programs. She served as Programme Officer for the Mayer & Morris Kaplan Family Foundation for four years, assisting in the grant-making process. She also served as Executive Director of the Space Movement Project, a non-profit contemporary dance organization featured in eight original world premieres, as well as shorter pieces for festivals and concerts in the Greater Chicago area.



Pacey Foster is **Associate Professor of Management** at College of Management, University of Massachusetts, Boston. His research focuses on the connections among social, economic and regional dynamics in creative industries. I am particularly interested in how networks at one level of analysis (e.g., among individuals) affect the structure of networks at higher levels of analysis (e.g., among organizations and industry sectors). My early research identified how nightclub talent buyers use their social networks to manage the uncertainties and risks associated with booking bands. I wrote the first academic history of Boston hip-hop and conducted a benchmark study on the local film and television industry which was funded by a Creative Economy Initiatives Grant from the University of Massachusetts. In 2014, I launched the Massachusetts Hip Hop archive with the Special Collections at UMASS Boston and worked with the Massachusetts Cultural Council on an evaluation of the Adams Arts Program.



Patrick Fuery is **Dean of Wilkinson College of the Arts**. He is a graduate of Murdoch University, Australia, with a BA (Hons), MPhil and Phd in Comparative Literature. He has held posts at the University of London (Royal Holloway College), Sussex University, and the University of Newcastle (Australia). He is the author of eight books and has been translated into Chinese, Italian, French, and Korean. His most recent book is *Madness and Cinema*. His research interests include psychoanalysis, semiotics, literary and cultural theory, gender studies, film and visual studies, medicine and the arts. He is currently completing two books: a study on cultural disturbance and the sublime; and an edited collection on medicine, culture, and the arts.



Jasmine Hagans is **Curator of Lectures, Courses, and Concerts** at Museum of Fine Arts, Boston (MFA). Ms. Hagans was previously the MFA's Manager of Lectures, Courses, and Concerts since 2010. Her many accomplishments include tripling the size of the Museum's seasonal series of concerts, making it one of the most varied programs in the city. A native of Bucks County, Pennsylvania, Ms. Hagans graduated Summa Cum Laude from Northeastern University's Music Industry program in 2009 with minors in Business Administration, Urban Studies, and History. As an undergraduate, she was an intern at the MFA in the Museum Learning and Public Programs department. Ms. Hagans is the daughter of a professional jazz musician and has learned to parlay her musical language into a career in the music industry. Before her tenure at the MFA, she worked in numerous Boston music venues, acted as



a tour manager, designed lighting systems, and worked with management companies and booking agencies in Boston and New York City from 2004-2009. Additionally, she received her Certificate to teach English as a Foreign Language in 2008. Ms. Hagans taught English at the English Friends Academy in Seoul, South Korea in August of 2008.

Kristing Hoskins is **Manager of Courses, Lectures and Concerts** at Museum of Fine Arts, Boston. Previously, she was the Founder and Co-Director of Sprout Seattle from June 2010 – October 2013. Sprout is a community dinner that funds emerging artists with a vote where she coordinated, curated and implemented quarterly dinners for over 150 people. She has also worked as a Audience Development Programs Manager at the EMP Museum in Seattle where she was responsible for strategic development, budget planning and oversight, maximizing opportunities to broaden and grow audiences. Also at the EMP she was the Programs Coordinator from November 2009 – December 2012 where she worked to design, coordinate and implement a variety of public programs for a thriving pop culture museum.



Mitchell Kossak is **Associate Professor** and has taught on the Lesley campus and at the Israeli extension since 1995. He has worked as an expressive arts therapist for the past 28 years and has been a licensed clinical counselor since 1994. His clinical work combines expressive arts therapies with body-centered approaches with a variety of populations addressing issues such as chronic pain, recovery from trauma, depression, anxiety, life transitions and relationships. In addition he has worked extensively with autistic children and adults. He has presented his work and research at conferences nationally and internationally. He is the Associate Editor of The Journal of Applied Arts and Health, Co-Chair of the Institute for Arts and Health at Lesley University and Executive Co-Chair of the International Expressive Arts Therapy Association. He is also a professional musician, performing for the past 30 years in the Boston area.



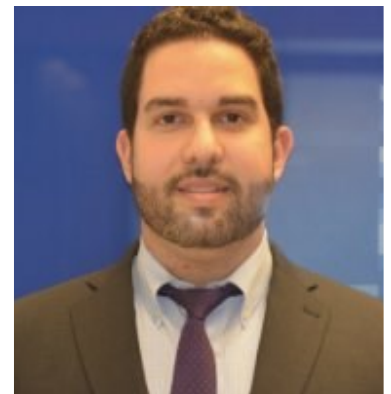
Richard Maloney is **Assistant Professor and Assistant Director of Arts Administration** at Boston University, where he teaches classes in performing arts management, fundraising, and comparative cultural policy. He previously served as General Manager of the Boston Camerata and worked for the Boston Early Music Festival and New England Conservatory. He holds undergraduate degrees from Bates College and Berklee College of Music, a Graduate Diploma in Early Music from the Longy School of Music, a master's in Arts Administration from Boston University, and a doctorate in Law and Public Policy from Northeastern University. His work has been published by the Brookings Foundation and appears in the ENCATC Journal of Cultural Management and Policy. He sits on the editorial boards of the Journal of Art for Life and the Irish Journal of Arts Management and Cultural Policy. His most recent research explores how policy networks impact the formation and implementation of cultural economic development policy.



Vivien Marcow-Speiser is Professor, Expressive Therapies; Director of National, International, and Collaborative Programs at Lesley University. Vivien Marcow Speiser has directed and taught in programs across the United States and internationally and has used the arts as a way of communicating across borders and across cultures. She believes in the power of the arts to create the conditions for personal and social change and transformation. Her interests and expertise lie in the areas of working with trauma and cross-cultural conflict resolution through the arts and she has worked extensively with groups in the Middle East and in South Africa. In addition, she is an expert in the creation and performance of rites of passage rituals and in the use of dance and performance in expressive therapy practice. She is the winner of the 2014 Distinguished Fellows Award from the Global Alliance for Arts and Health, and the 2015 Honorary Fellow Lifetime Achievement Award from the Israeli Expressive and Creative Arts Therapy Association.



Timothy Rivera is currently Programs Officer at the Delegation of the European Union to the United States, responsible for the management, development, and implementation of a €6.5+ million portfolio of grants and contracts under the EU's Partnership Instrument to support policy, education, and public diplomacy programs in the United States. He also manages the EU's relationships with American universities, think tanks, and civil society. He joined the European Union after four years with the British Council, finishing as the Project Manager for Bridging Voices, a grants program supporting transatlantic academic and policy dialogues on a broad range of issues at the intersection of religion and international affairs. Bridging Voices was funded by a \$450,000 grant from the Henry Luce Foundation. He also worked extensively on the British Council's Our Shared Future project, supported by a \$500,000 grant from the Carnegie Corporation of New York, to improve transatlantic discourse on relations between Muslims and non-Muslims through the development and mobilization of a network of academics, experts, and journalists on both sides of the Atlantic. In 2014, he completed a Master of Arts in International Relations with distinction from the War Studies Department at King's College London where my research focused on cultural relations and cultural diplomacy. In January 2015, The University of Southern California's Center for Public Diplomacy published his MA dissertation, Distinguishing Cultural Relations from Cultural Diplomacy: The British Council's Relationship with Her Majesty's Government. His professional expertise includes transatlantic relations, European/EU politics, cultural relations, public and cultural diplomacy, inter-cultural dialogue, Muslim/non-Muslim relations, religion and international affairs, and British politics and government.



Alan Salzenstein is currently President of the Association of Arts Administration Educators (AAAE) as well as Professor at DePaul University in Chicago as head of the MFA/Arts Leadership and Performing Arts Management programs. Salzenstein has held various Executive Director positions for a wide array of arts organizations over the past thirty years. In addition to a long history of theatrical producing, he has devised and overseen many special events and maintains an active consulting service for artists and arts organizations. He is a frequent invited speaker on topics related to arts management and legal issues in the arts, having presented across North America, Europe and Asia. Salzenstein is also an attorney, focusing on issues relating to the performing arts industry.



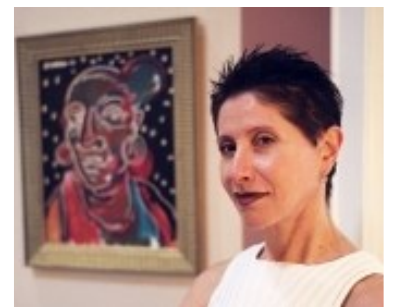
Annick Schramme is **President of ENCATC** and a full professor and academic director of the master in Cultural Management and the Competence Center Management, Culture & Policy (Faculty of Applied Economics at the University of Antwerp). Annick Schramme is a full professor and academic director of the master in Cultural Management and the Competence Center Management, Culture & Policy (Faculty of Applied Economics at the University of Antwerp). Additionally, she is academic director of the Competence Center Creative Industries at the Antwerp Management School. She has published about Arts policy in Flanders, cultural governance, international cultural policy, public-private partnerships in the heritage sector, leadership and cultural entrepreneurship, etc. From 2004 until 2013 she was also advisor-expert of the Vice-Mayor for Culture and Tourism of the City of Antwerp. She is member of several boards of cultural organizations and governmental advisory committees in Flanders and the Netherlands. In 2013 she became the president of ENCATC, the international network on cultural management and cultural policy education.



Over a 20-year career in the arts and entertainment industry, **Margo Saulnier** has demonstrated a focus on innovative programming, new audience development, community engagement and sales analysis. She produces, books and manages live concerts, often with multi-media or film integration, blending classical, pop, indie, jazz, gospel, folk, songbook and world music. Margo is currently **Assistant Director of Artistic Planning for the Boston Pops at the Boston Symphony Orchestra**, where she books contemporary artists and repertoire, including the orchestral debuts of Guster, My Morning Jacket, Aimee Mann, Natalie Merchant, Amanda Palmer, Paul Oakenfold, Ozomatli, Steve Martin and many others. She also supervises film and multi-media content for the Boston Pops, including the world premieres of Chris van Allsburg's *The Polar Express*, Jan Brett's *The Night Before Christmas*, and an audience sing-along to the popular video game *The Beatles Rock Band*. Prior to working at the BSO, she was a member of the programming team at Lincoln Center for the Performing Arts, producing over 200 programs each year for the Great Performers series, American Songbook series and the Mostly Mozart Festival.



Doris Sommer, Director of the Cultural Agents Initiative at Harvard University, is Ira and Jewell Williams Professor of Romance Languages and Literatures and of African and African American Studies. Her academic and outreach work promotes development through arts and humanities, specifically through "Pre-Texts" in Boston Public Schools, throughout Latin America and beyond. Pre-Texts is an arts-based training program for teachers of literacy, critical thinking, and citizenship. Among her books are *Foundational Fictions: The National Romances of Latin America* (1991) about novels that helped to consolidate new republics; *Proceed with Caution when Engaged by Minority Literature* (1999) on a rhetoric of particularism; *Bilingual Aesthetics: A New Sentimental Education* (2004); and *The Work of Art in the World: Civic Agency and Public Humanities* (2014). Sommer has enjoyed and is dedicated to developing good public school education. She has a B.A. from New Jersey's Douglass College for Women, and Ph.D. from Rutgers University.



Mary Helen Young is **Operations Manager at Visiting Arts**. She has wide-ranging experience in EU funding, international cooperation, project management, and event management. Mary Helen spent the first part of her arts management career in Washington, DC working with the Smithsonian Institution performing arts programmes and subsequently worked as a freelance fundraiser, with the Cultural Leadership Programme and with the Louise Blouin Foundation in London. She holds a MA in Cultural Policy and Management from City University London, and a Bachelor of Music from Vanderbilt University. Partners in Mary Helen's work include La Maison Francaise, the Japan Information and Culture Center, Edinburgh International Festival, and the British Council.



A woman in silhouette is looking through binoculars in an art gallery. The wall is a vibrant red, and a framed picture of a woman in a red dress is visible. The ceiling has large, white, abstract shapes.

WHAT DO PARTICIPANTS SAY?

The ENCATC International Study Tour initiative is the opportunity to meet highest-level inspiring people in first-class frameworks. It's a real unique enriching full immersion into the world of culture and cultural management!

-Federico Rinaldi, project manager at Ghislierimusica in Italy
3rd ENCATC International Study Tour participant

SUGGESTED CULTURAL ACTIVITIES

Cultural Activities in Boston (at participants' expenses)

Friday 3 and Saturday 4:

- The Boston Society of Architects "Common Boston Festival 2016": <http://www.architects.org/programs-and-events/common-boston-festival>

Saturday June 4:

- Of This Body (dance theatre), 8pm at the Dance Complex (Cambridge, Central Square) <http://ofthisbody.bpt.me>
- Dogfight (musical theater, Spotlight Theatre Company), 8pm at the Roberts Theatre, Calderwood Pavilion at the BCA (Boston, South End) <http://www.bostontheatrescene.com/season/Dogfight/>
- Raiders of the Lost Ark live with the Boston Pops (film and live orchestral accompaniment), 8pm at Symphony Hall (Boston, Back Bay) <https://www.bso.org/Performance/Detail/79083/>
- Christian McBride Trio (jazz), 8pm at Scullers Jazz Club (Boston, Allston) <http://www.scullersjazz.com/attractions.html?monthnumb=6>

Monday June 6:

- Jordan Tice and Horse County (bluegrass), 8pm at Club Passim (Cambridge, Harvard Square) <http://passim.org/club/jordan-tice-and-horse-county-cd-release>
- Benjamin Clementine (singer/songwriter), 8pm at the Sinclair (Cambridge, Harvard Square) http://worldmusic.org/content/event_page/4196/benjamin-clementine
- Mashrou' Leila (folk rock), 7pm at the Middle East Downstairs (Cambridge, Central Square) <http://www.ticketweb.com/t3/sale/SaleEventDetail?eventId=6707795&pl=mideastnew&dispatch=loadSelectionData>

For more options: <http://calendar.artsboston.org/>

Photo credit: Chris Devers via Flickr CC BY-NC-ND 2.0





PRACTICAL INFORMATION

DATES

3-7 June 2016

PLACE

Boston, United States

FEES*

420.04€

ENCATC members & AAAE members (SAVE 30%)

Is your institution a [member of ENCATC](#)?

263.7€

AAAE Conference Participants

(SPECIAL OFFER 5-7 June)

593.44€

NON-members

185.00€

Students** from ENCATC & AAAE member institutions

(SAVE 30%)

263.76€

Students** from NON- member institutions

*PLEASE NOTE: Travel, accommodation and subsistence costs are NOT included in the fees.

** Full time students age 28 or younger enrolled in Bachelor or Master programme (not PHD) // Travel, accommodation and subsistence costs NOT included.

HOTEL SUGGESTIONS

Visit our website for [hotel suggestions](#) and options located near public transport.

REGISTRATION

www.eventbrite.com/e/4th-encatc-international-study-tour-boston-usa-tickets-24801453816

LANGUAGE

English

WEBSITE

www.encatc.org/en/events/detail/4th-encatc-international-study-tour-in-boston/

CONTACT

GiannaLia Cogliandro Beyens

ENCATC Secretary General

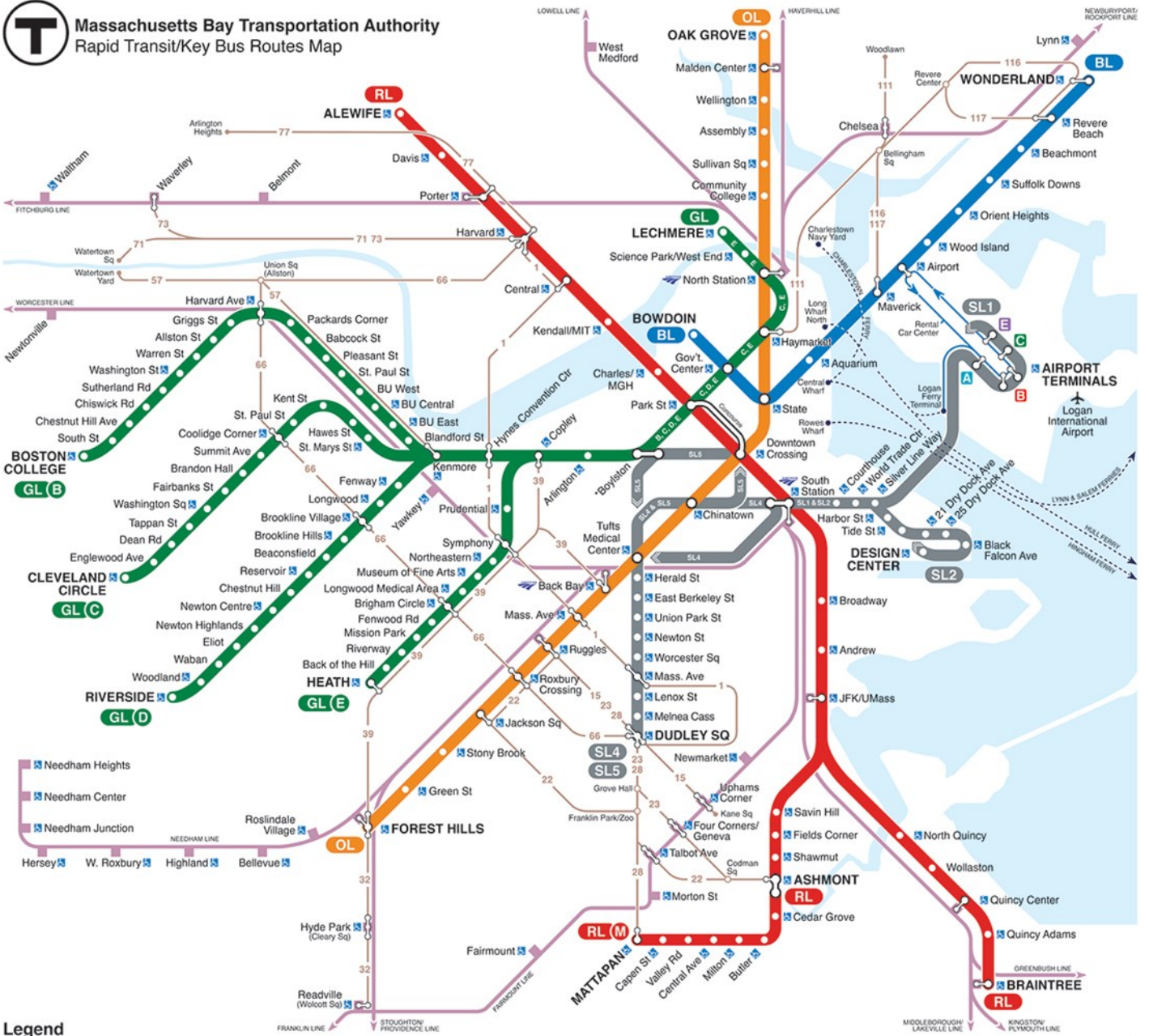
info@encatc.org

Tel: +32 (0)2 201 29 12

USEFUL MAPS



Massachusetts Bay Transportation Authority Rapid Transit/Key Bus Routes Map



Legend

- | | | | | | | |
|------------------------|------------------------------------|------------------------------------|--|---|--|--|
| RL RED LINE | SL SILVER LINE and branches | GLB GREEN LINE and branches | COM COMMUTER RAIL | Accessible station
All MBTA and Massport bus and ferry services are accessible | Free Logan Airport shuttle bus | Customer Communications & Travel Info
617-222-3200, 800-392-6100,
TTY 617-222-5146, www.mbta.com |
| M MATTAPAN LINE | GL GREEN LINE and branches | GLC GREEN LINE and branches | 000 KEY BUS ROUTE
Frequent service | Rapid Transit transfer station | Amtrak service
Back Bay, North & South stations | MBTA Transit Police: 911
TTY 617-222-1200 |
| OL ORANGE LINE | GLD GREEN LINE and branches | GLE GREEN LINE and branches | F FERRY | Commuter Rail transfer station | Boylston : Accessible for Silver Line only | Elevator/escalator/lift updates: 800-392-6100
Not to scale |
| BL BLUE LINE | GLB GREEN LINE and branches | GLC GREEN LINE and branches | | | | |

© February 2016 v.27

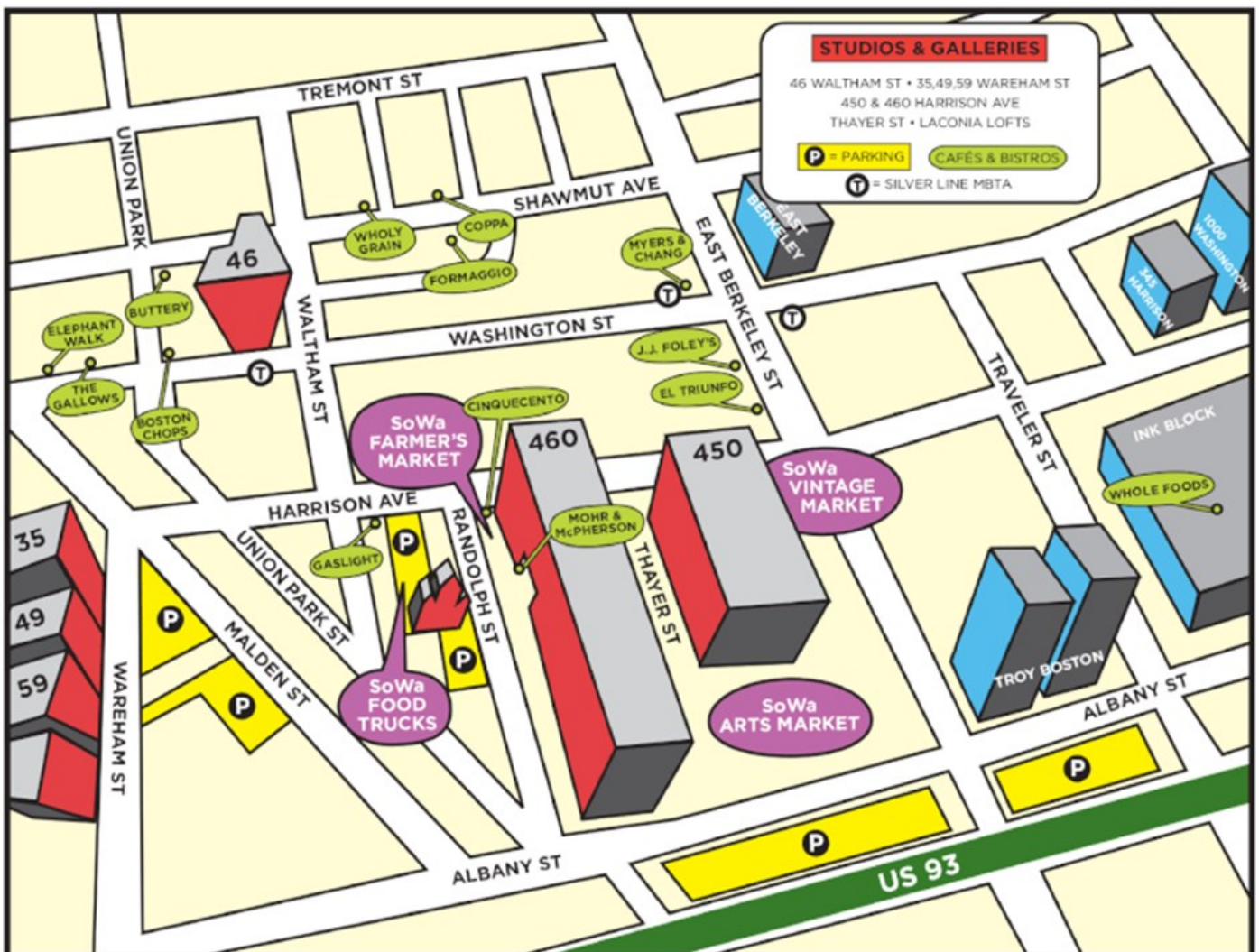
SoWa Gallery Tour and South End Market

Address: Boston's South End neighborhood

[SoWa](#) (South of Washington), Boston's gallery district, is a vibrant destination on summer Sundays starting around 10am. Visitors can browse dozens of galleries, the [SoWa Vintage Market](#) (indoors), and the SoWa Arts and Crafts Market (outdoors, 75+ vendors). Dining options include a local farmers market, 20 food trucks, and several close cafés, bistros, and pubs. Everything is in easy walking distance, and you are encouraged to come early and explore!

Recommended galleries include:

- Allston Skirt Gallery
- Ars Libri / Robert Klein
- Carroll and Sons
- Gallery Kayafas
- Kingston Gallery
- Samson Projects
- Steven Zevitas Gallery
- Yezerski + Miller Gallery



ENCATC is the European network on cultural management and policy. It is an independent membership organisation gathering over 100 higher education institutions and cultural organisations in over 40 countries. ENCATC was founded in 1992 to represent, advocate and promote cultural management and cultural policy education, professionalize the cultural sector to make it sustainable, and to create a platform of discussion and exchange at the European and international level.

The European Commission support for the production of this publication does not constitute an endorsement of the contents which reflects the views only of the authors, and the Commission cannot be held responsible for any use which may be made of the information contained therein.

Avenue Maurice 1
1050 Brussels,
Belgium

T +32 (0)2 201 29 12
info@encatc.org
www.encatc.org



Co-funded by the
Creative Europe Programme
of the European Union